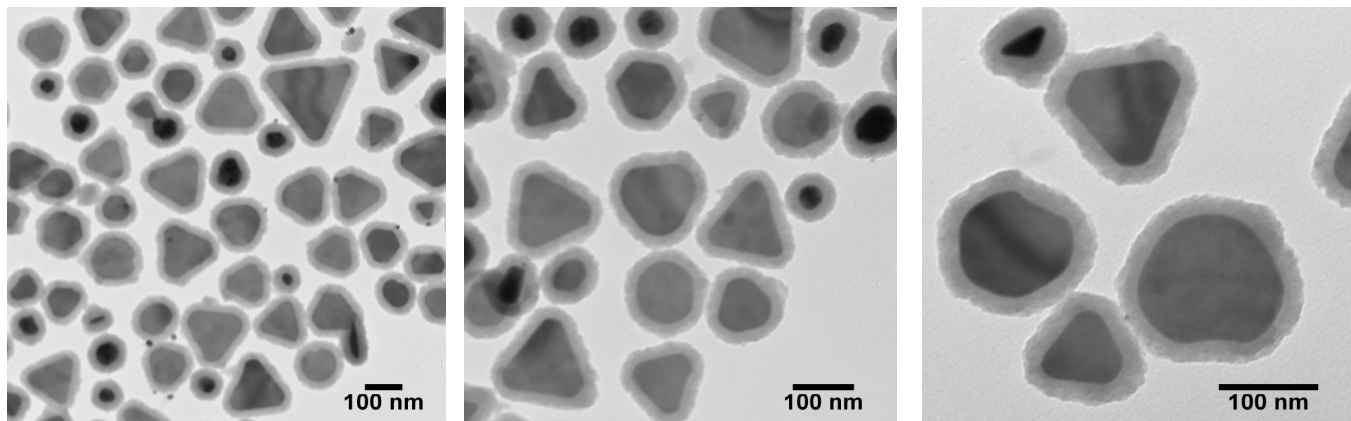


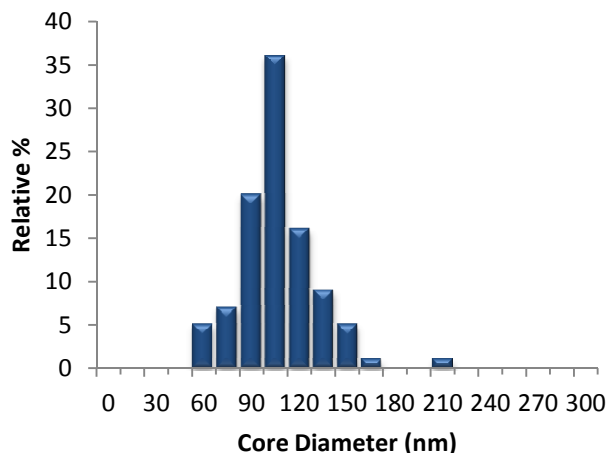
950 nm Resonant Silica Coated Silver Plates

Lot Number: KJW1535

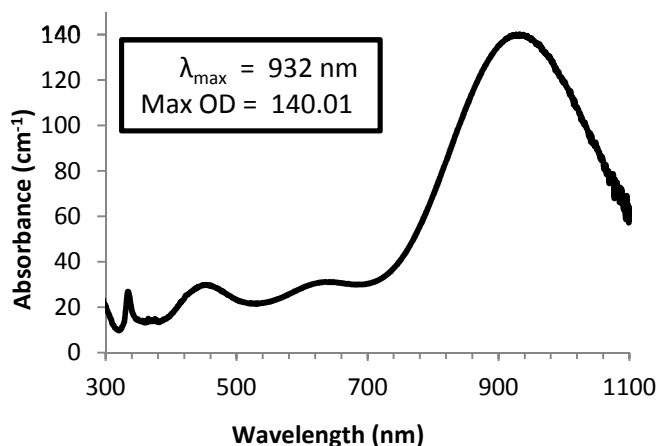
Core Diameter (TEM):	99.9 nm	Mass Concentration (Ag)	1.0 mg/mL
First Standard Deviation:	23.7 nm	pH of Solution:	8.8
Coefficient of Variation:	23.7 %	Particle Surface	Silica
Shell Thickness (TEM):	21.2 nm	Solvent:	10 mM Bicarbonate Buffer
Peak Wavelength:	932.0 nm		



Size Distribution



Optical Properties



Characterization Instrumentation

Diameter and Size Statistics:	JEOL 1010 Transmission Electron Microscope
Mass Concentration:	Thermo Fisher X Series 2 ICP-MS
Spectral Properties:	Agilent 8453 UV-Visible Spectrometer
Hydrodynamic Diameter/Zeta Potential:	Malvern Zetasizer Nano ZS.

Storage and Handling: 4 °C away from light. DO NOT FREEZE.