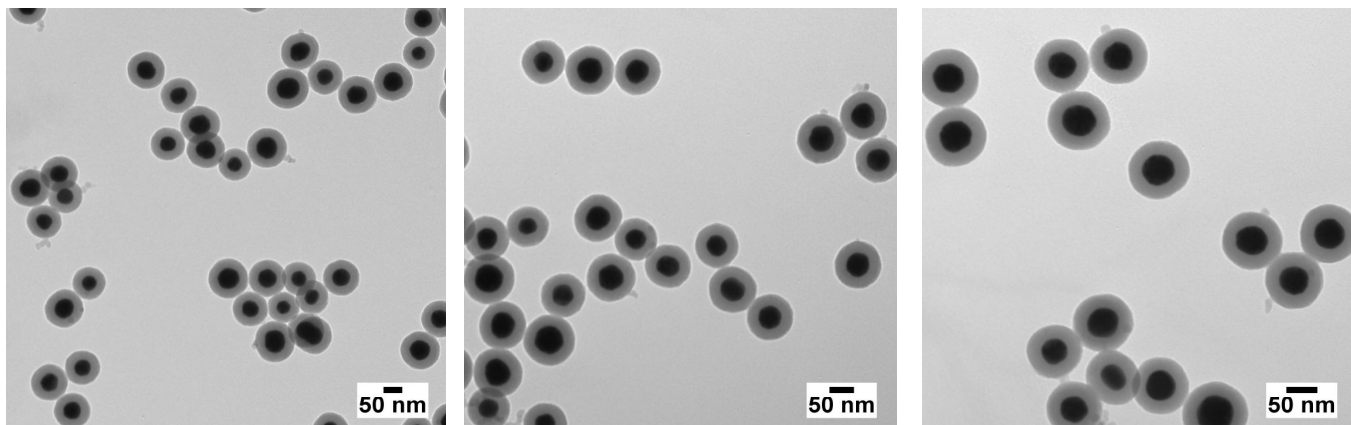


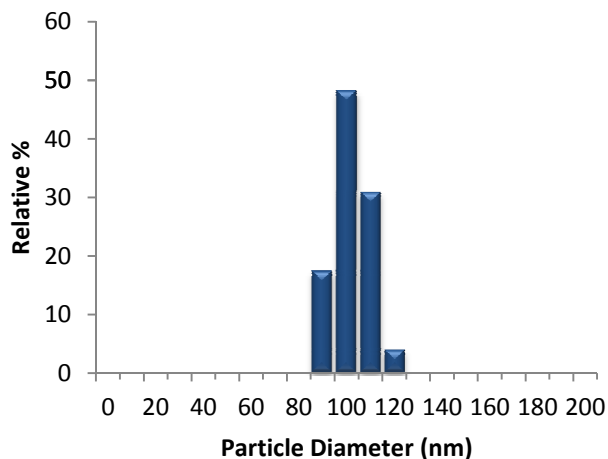
Aminated Silica Shelled 50 nm NanoXact™ Gold

Lot Number:CLF0212

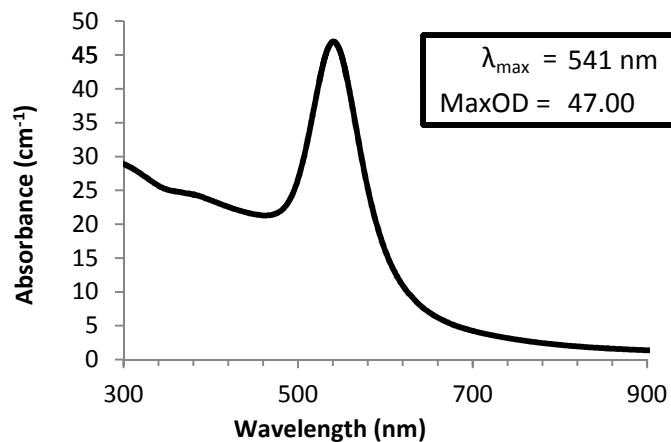
Total Diameter (TEM):	96.6 nm	Mass Concentration (Au):	1.16 mg/mL
Coefficient of Variation:	6.9 %	Hydrodynamic Diameter:	179.0 nm
Core Diameter (TEM):	50.6 nm	Zeta Potential:	14.0 mV
Shell Thickness (TEM):	23.0 nm	pH of Solution:	7.8
Surface Area (TEM):	3.2 m ² /g	Particle Surface:	Amine Terminated
Particle Concentration:	8.8E+11 particles/mL	Solvent:	Ethanol



Size Distribution



Optical Properties



Characterization Instrumentation

Diameter and Size Statistics:	JEOL 1010 Transmission Electron Microscope
Mass Concentration:	Thermo Fisher X Series 2 ICP-MS
Spectral Properties:	Agilent 8453 UV-Visible Spectrometer
Hydrodynamic Diameter/Zeta Potential:	Malvern Zetasizer Nano ZS.

Storage: 4 °C. DO NOT FREEZE.